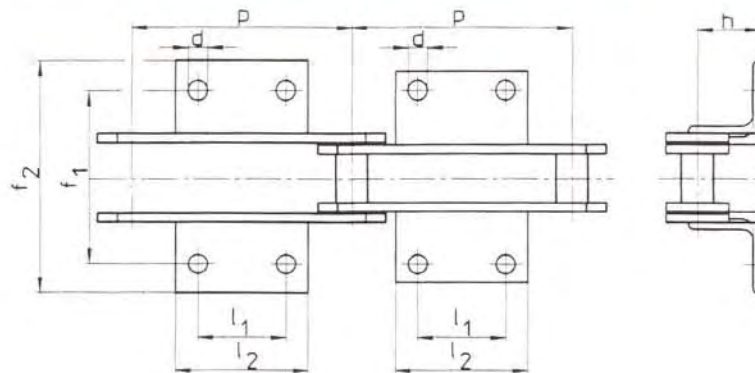
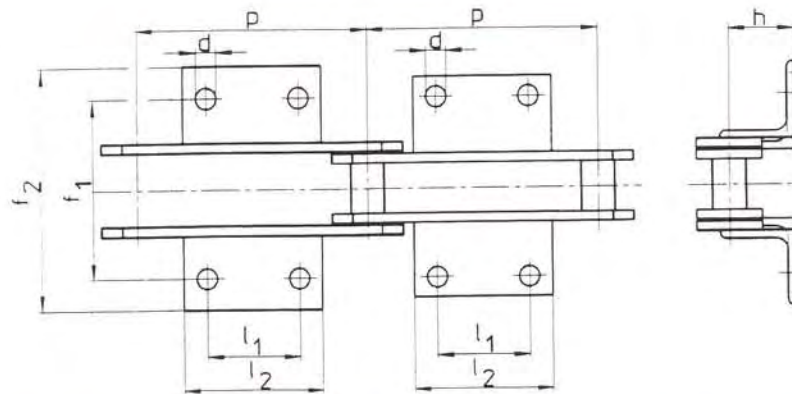


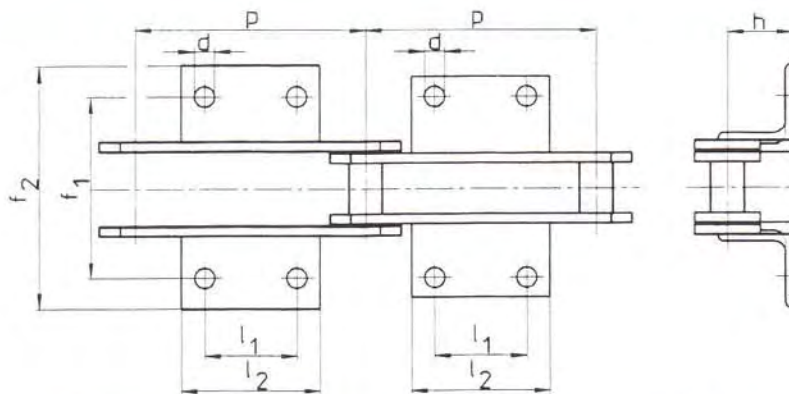
DIN number of chain	Pitch	Length of bracket $l_2$	Hole pitch $l_1$	Hole $\varnothing$ $d$	Distance between hole centres $f_1$	Overall width of chain $f_2$ (max)	Height above chain centre $h$	Bracket DIN 1028
	$p$							
mm								
FV 40	63	31	-	6,6	50	100	20	25x25x3
	100	50	30					
FV 63	63	40	-	9,0	68	110	30	30x30x3
	100	50	30					
	125	60	40					
	160	70	50					
FV 90	100	50	30	9,0	80	130	35	40x40x4
	125	60	40					
	160	70	50					
	200	80	60					
	250	85	65					
FV 112	100	50	30	11,0	100	140	40	40x40x5
	125	65	40					
	160	75	50					
	200	90	65					
	250	105	80					
FV 140	100	55	30	11,0	100	170	45	50x50x5
	125	65	40					
	160	75	50					
	200	90	65					
	250	105	80					
	315	125	100					
FV 180	125	65	35	13,5	128	190	45	50x50x6
	160	80	50					
	200	95	65					
	250	110	80					
	315	130	100					
	400	130	100					
FV 250	125	50	-	13,5	138	230	55	65x65x7
	160	80	50					
	200	95	65					
	250	110	80					
	315	130	100					
	400	130	100					
FV 315	160	50	-	13,5	170	260	60	70x70x9
	200	95	65					
	250	110	80					
	315	130	100					
	400	130	100					
FV 400	160	50	-	17,5	190	290	65	80x80x10
	200	100	60					
	250	120	80					
	315	140	100					
	400	140	100					
FV 500	160	50	-	17,5	200	300	70	80x80x10
	200	90	50					
	250	120	80					
	315	140	100					
	400	140	100					
	500	140	100					
FV 630	200	50	-	17,5	230	350	80	100x100x10
	250	110	70					
	315	140	100					
	400	140	100					
	500	140	100					



DIN number of chain	Pitch p	Length of bracket l <sub>2</sub>	Hole pitch l <sub>1</sub>	Hole ø d	Distance between hole centres f <sub>1</sub>	Overall width of chain f <sub>2</sub> (max)	Height above chain centre h	Bracket DIN 1028/ DIN 1029
mm								
M 20	40	14	-	6,6	54	84	16	25x25x3
	50	14	-					
	63	35	20					
	80	50	35					
	100	65	50					
	125	65	50					
M 28	50	20	-	9,0	64	100	20	20x30x3
	63	20	-					
	80	45	25					
	100	60	40					
	125	85	65					
	160	85	65					
M 40	63	20	-	9,0	70	112	25	30x30x3
	80	40	20					
	100	60	40					
	125	85	65					
	160	85	65					
	200	85	65					
M 56	63	22	-	11,0	88	140	30	40x40x4
	80	22	-					
	100	50	25					
	125	75	50					
	160	110	85					
	200	110	85					
M 80	80	22	-	11,0	96	160	35	40x40x4
	100	22	-					
	125	75	50					
	160	110	85					
	200	150	125					
	250	150	125					
M 112	80	28	-	14,0	110	184	40	50x50x6
	100	28	-					
	125	65	35					
	160	95	65					
	200	130	100					
	250	130	100					
	315	130	100					
400	130	100						



DIN number of chain	Pitch	Length of bracket	Hole pitch	Hole	Distance between hole centres	Overall width of chain	Height above chain centre	Bracket DIN 1028
	p	l <sub>2</sub>	l <sub>1</sub>	∅ d	f <sub>1</sub>	f <sub>2</sub> (max)	h	
mm								
M 160	100	30	---	14,0	124	200	45	50x50x6
	125	30	---					
	160	80	50					
	200	115	85					
	250	175	145					
	315	175	145					
	400	175	145					
M 224	500	175	145					
	125	35	---	18,0	140	228	55	60x60x8
	160	35	---					
	200	100	65					
	250	160	125					
	315	225	190					
	400	225	190					
M 315	500	225	190					
	630	225	190					
	160	35	---	18,0	160	250	65	70x70x9
	200	85	50					
	250	135	100					
	315	190	155					
	450	190	155					
M 450	500	190	155					
	630	190	155					
	200	40	---	18,0	180	280	75	70x70x9
	250	125	85					
	315	195	155					
	400	280	240					
	500	280	240					
M 630	630	280	240					
	800	280	240					
	250	50	---	24,0	230	380	90	100x100x12
	315	150	100					
	400	240	190					
	500	350	300					
	630	350	300					
M 900	800	350	300					
	1000	350	300					
	250	60	---	30,0	280	480	110	120x120x15
	315	125	65					
	400	215	155					
	500	300	240					
	630	300	240					
800	300	240						
1000	300	240						



DIN number of chain	Pitch	Length of bracket	Hole pitch	Hole	Distance between hole centres	Overall width of chain	Height above chain centre	Bracket DIN 1028
	p	l <sub>2</sub>	l <sub>1</sub>	∅ d	f <sub>1</sub>	f <sub>2</sub> (max)	h	
				mm				
MC 28	63	20	---	9,0	70	112	25	30x30x3
	80	40	20					
	100	60	40					
	125	85	65					
	160	85	65					
MC 56	80	25	---	11,0	88	152	35	40x40x4
	100	25	---					
	125	75	50					
	160	110	85					
	200	150	125					
	250	150	125					
MC 112	100	30	---	14,0	110	192	45	50x50x6
	125	30	---					
	160	80	50					
	200	115	85					
	250	175	145					
	315	175	145					
MC 224	160	35	---	18,0	140	220	65	60x60x8
	200	85	50					
	250	135	100					
	315	190	155					
	400	190	155					
	500	190	155					