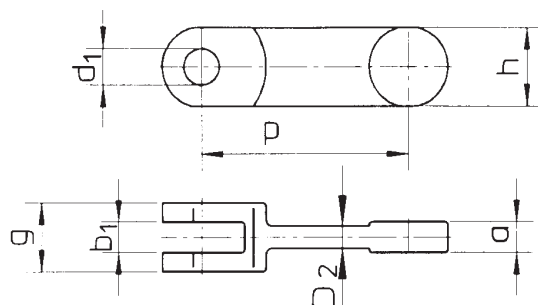


## 6.6 Тяговые цепи

Тяговая цепь

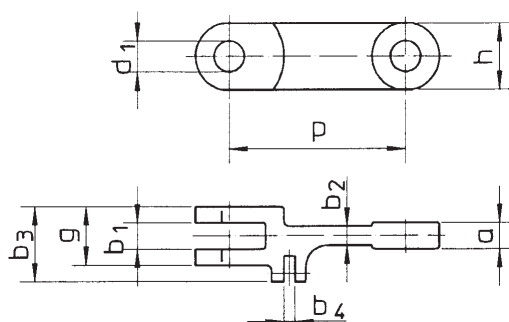
Лист 1/1



Шаг p	Валики ∅ d <sub>1</sub>	Высота вилки h	Ширина вилки g	Ширина отверстия a	Ширина в свету b <sub>1</sub>	Ширина перемычки b <sub>2</sub>
ММ						
101,6	14	36	24	9,0	10,0	6,0
101,6	14	36	30	13,0	14,0	9,0
142	22	40	46	20,0	22,0	13,0
142	25	50	42	18,5	20,0	13,0
142	25	50	54	25,0	26,5	16,0
142	25	50	62	28,0	30,0	15,0
142	20	47	24	9,0	10,0	7,0
150	18	36	42	17,0	18,0	12,0
150	25	47	42	16,0	18,0	12,0
150	20	47	24	9,0	10,0	7,0
160	22	45	46	23,0	25,0	15,0
160	25	53	50	23,0	25,0	13,5
200	25	50	60	25,0	27,0	18,0
200	30	60	66	29,0	32,0	20,0
216	35	72	64	26,0	28,0	20,0
220	35	72	64	26,0	28,0	20,0
220	32	75	58	28,0	30,0	25,0
220	35	75	71	31,0	33,0	21,0
250	34	75	70	32,0	34,0	18,0
260	32	75	65	32,0	34,0	20,0
260	32	75	70	32,0	34,0	20,0

Тяговая цепь с закреплением скребков

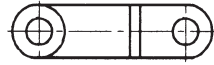
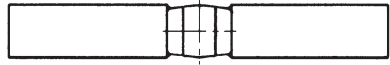
Лист 1/1



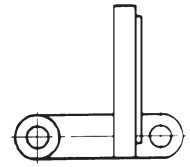
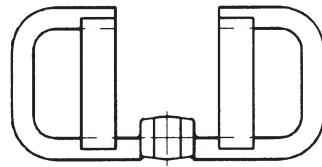
Шаг p	Валики ∅ d <sub>1</sub>	Высота вилки h	Ширина вилки g	Ширина отверстия a	Ширина в свету b <sub>1</sub>	Ширина перемычки b <sub>2</sub>	Общая ширина b <sub>3</sub>	Ширина захвата b <sub>4</sub>
ММ								
142	25	50	42	19	20	13	70	12
142	25	50	62	28	30	15	87	12
160	25	50	60	25	27	18	81	12
175	30	60	72	30	32	23	96	16
200	25	50	60	25	27	18	81	12
200	30	60	70	30	32	20	95	13
250	25	50	60	25	27	18	81	12
250	30	60	70	30	32	20	95	13
250	35	70	120	45	47	36	150	21

Примеры исполнения тяговых цепей

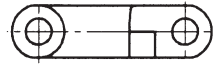
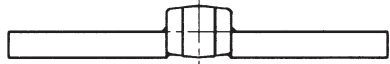
Тип 1 ( BT )



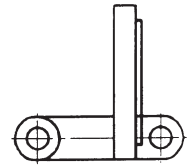
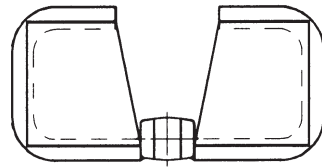
Тип 7



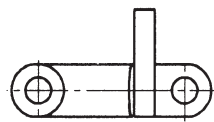
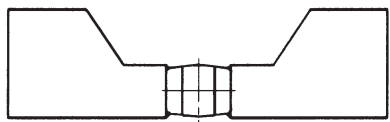
Тип 2 ( T )



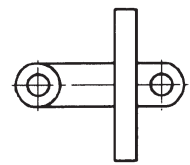
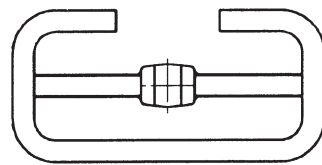
Тип 8



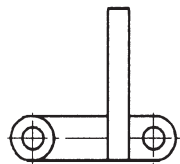
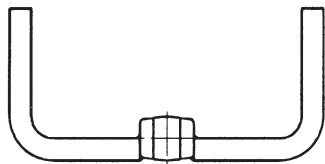
Тип 3



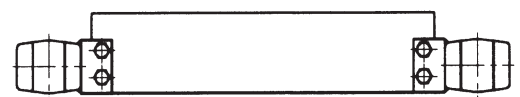
Тип 9



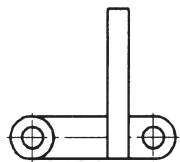
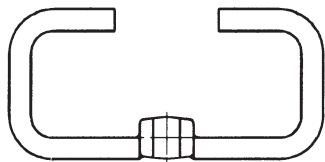
Тип 4 ( U )



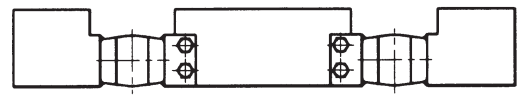
Тип 10



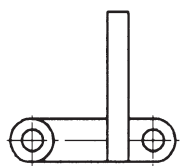
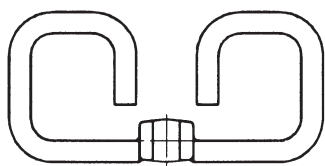
Тип 5 ( 0 )



Тип 11



Тип 6 ( 00 )



Тип 12

